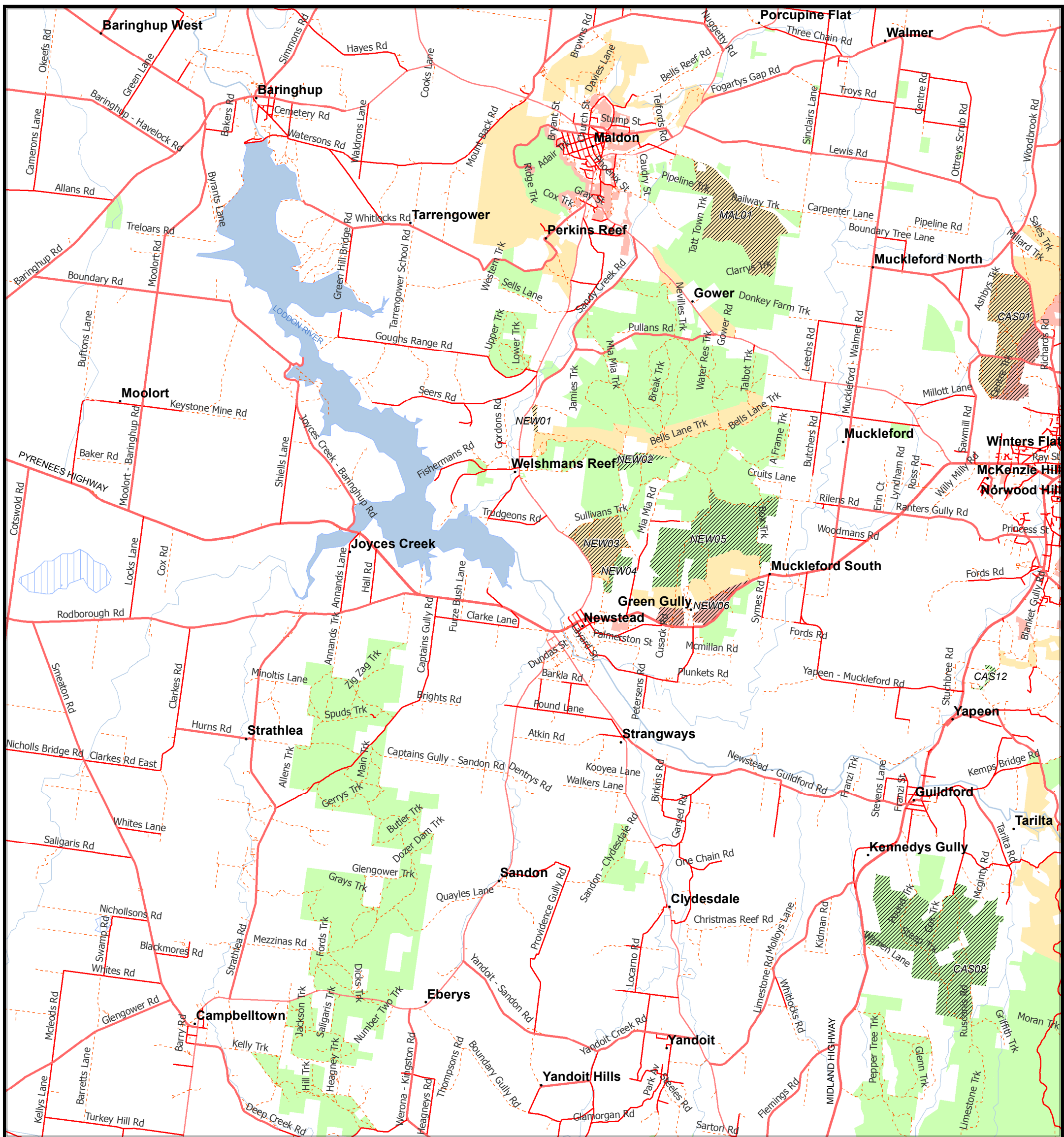


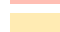
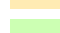
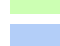


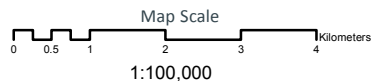
# Proposed Fire Management Zones

## Maldon area



Regional GIS Desktop

-  Area where zone change is proposed.
-  Asset Protection Zone
-  Bushfire Moderation Zone
-  Landscape Management Zone
-  Planned Burn Exclusion Zone



Universal Transvers Mercator Projection  
Datum: Geocentric Datum of Australia 1994 ~ GDA94  
Grid lines on this map show 1 kilometre intervals of the Map Grid of Australia (MGA), Zone 55.

17 November 2016

Document Name: Rezoning.mxd  
Document Path: E:\aaaaa\_West\_Central\_RL\Strategic\_Bushfire\_management\_plan\SBMP\_2016\Bushfire\_catchments\Wombat\Rezoning.mxd User ID: ab18

**Disclaimer**  
This publication may be of assistance to you but the State of Victoria and its employees do not guarantee that the publication is without flaw of any kind or is wholly appropriate for your particular purpose and therefore disclaims all liability for any error, loss or other consequence which may arise from you relying on any information in this publication.

**Accessibility**  
If you would like to receive this publication in an accessible format such as large print or black and white please telephone 136 186, or email [customer.service@delwp.vic.gov.au](mailto:customer.service@delwp.vic.gov.au).  
Deaf, hearing impaired or speech impaired?  
Call us via the National Relay Service on 133 677 or visit [www.relay.vic.gov.au](http://www.relay.vic.gov.au)

© The State of Victoria Department of Environment, Land, Water and Planning 2016